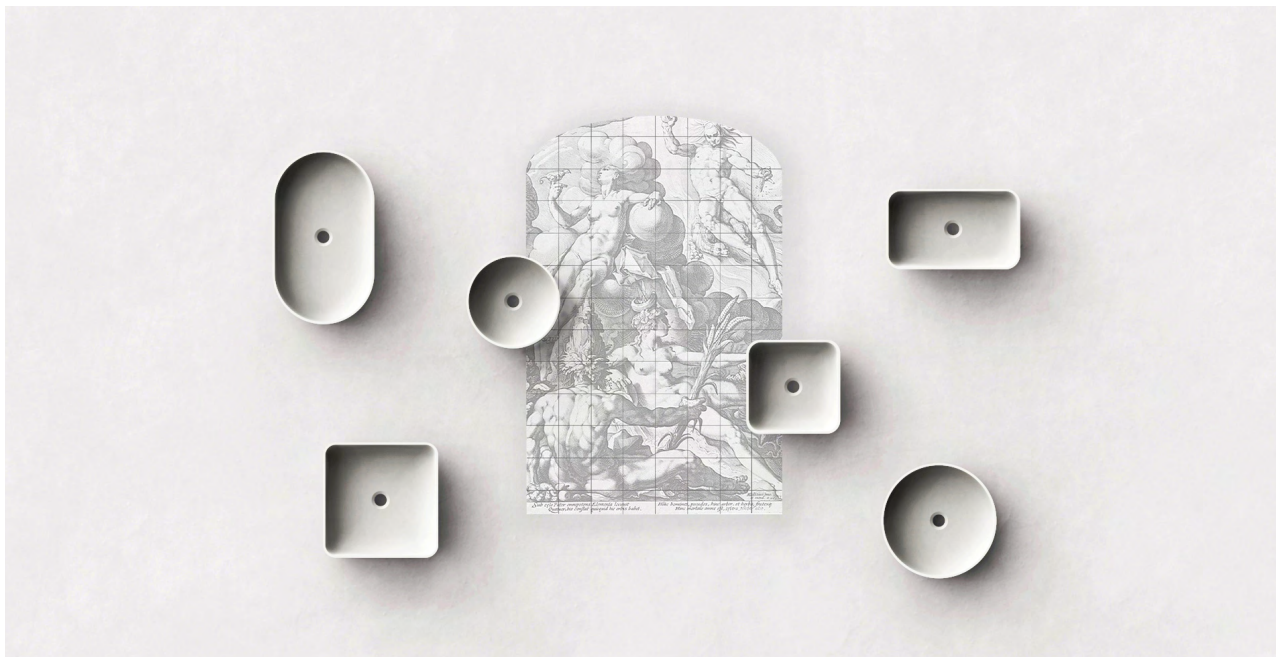


Technical Data Sheet

KOSMOS Collection



Hydra



Hydra

Within the Kosmos collection, Sandhelden designed elegant and classical-shaped bathtubs. Like a water goddess, the beautiful aesthetic of the models Nais und Hydra nestles in any interior.

With these two bathtub designs, Sandhelden achieves to bring the first marketable 3d printed bathtubs to the market, establishing sand as a new manufacturing material. A big milestone for the company that opens up many possibilities in the sanitary sector.



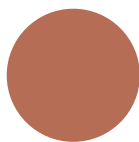
above: 1750 x 800 x 600 mm, glacier white

Material	quartz sand
Finish	matt
Standard size	1750 x 800 x 600 mm

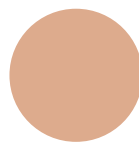
Standard colours



Velvet Red



Saffron Terracotta



Peach Ocher



Honey Yellow



Golden Ocher



Pine Green



Midnight Blue

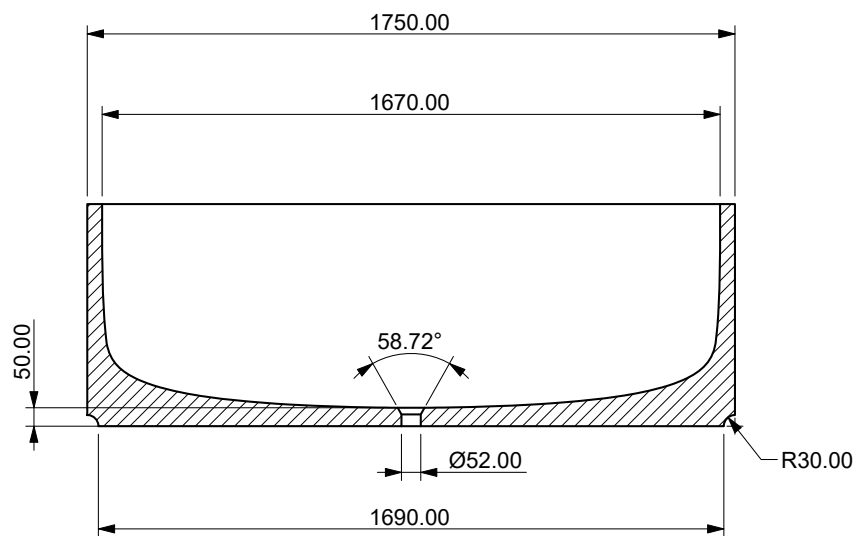


Aegean Blue

Hydra

1750 x 800 x 600 mm

A - A



B-B

